

Client:-
Sample
Project No:-
n/a
Site:-
Sample
Title:-
Drawing: 1 of 1
Building: Main
Floor: All
Date: Sept 2000
Revisions:-
Notes:-

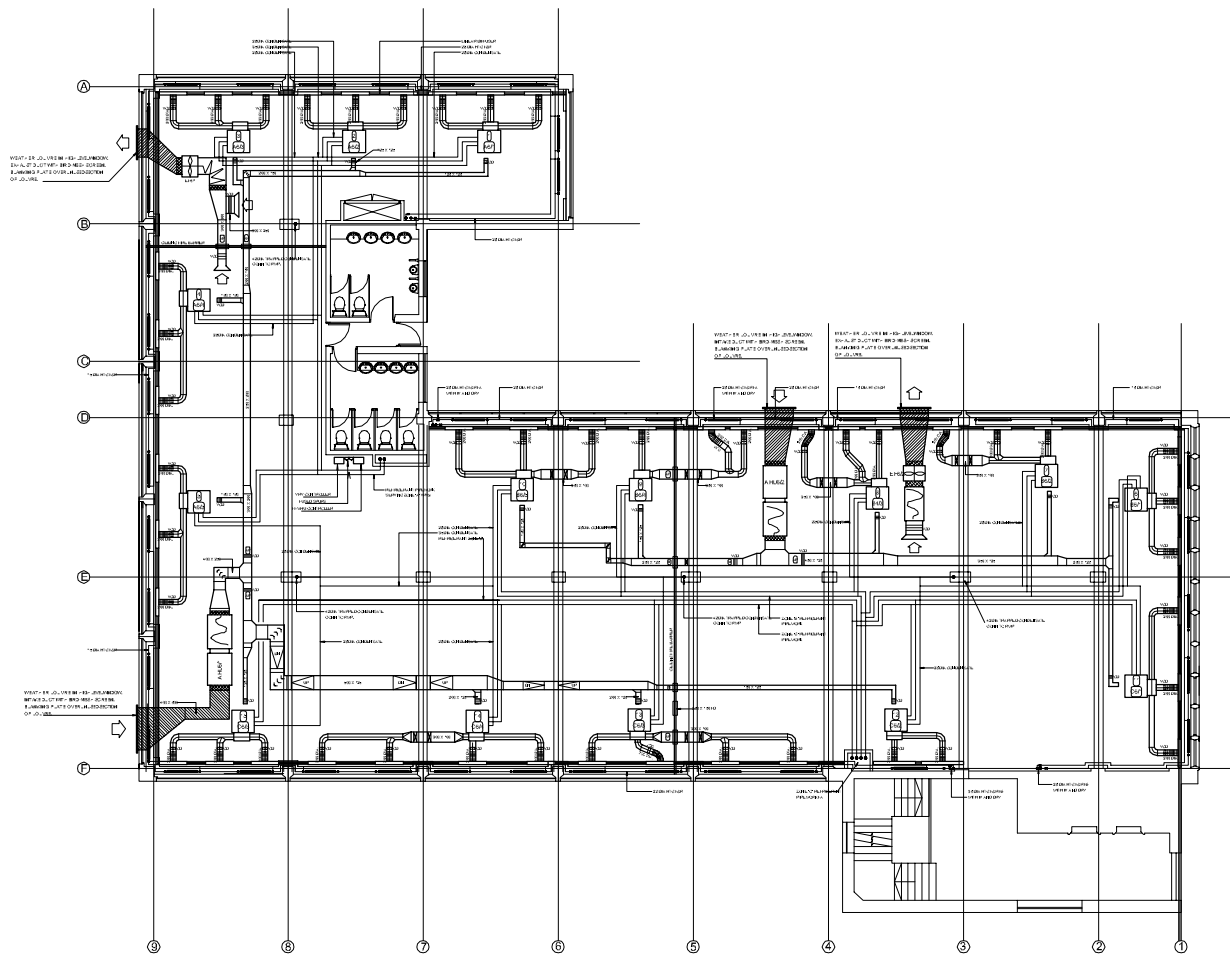
1) SUPPLY AIR HANDLING UNIT WITH CENTRIFUGAL FAN, ELECTRIC HEATER BATTERY AND PANEL FILTER. SILENCERS ARE FITTED ON DISCHARGE. INLET AND OUTLET ARE HIGH-DENSITY REVERTEX.

DUTIES:  
 AHU8/1 0.462m<sup>3</sup>/s at 125Pa, 12 kW  
 ELECTRIC HEATER - SYSTEM "A"  
 AHU8/2 0.320m<sup>3</sup>/s at 125Pa 9kW  
 ELECTRIC HEATER SYSTEM "B"

2) EXTRACT FAN UNIT COMPLETE WITH CENTRIFUGAL FAN AND SILENCER FITTED ON DISCHARGE. FLEXIBLE CONNECTORS ON INLET AND OUTLET ARE HIGH-DENSITY REVERTEX.

DUTIES:  
 EF6/4 0.462 /s at 125Pa - SYSTEM "A"  
 EF6/4 0.320m<sup>3</sup>/s at 125Pa - SYSTEM "B"

3) INTAKE AND EXHAUST SHOWN CROSS-HATCHED IS ACOUSTICALLY INSULATED WITH 25mm ROCKWOOL ENCASED IN 20mm THICK HIGH-DENSITY BOARD.



RADIATOR SCHEDULE				
REF	SECTION	LENGTH	TYPE	HEIGHT OUTPUT
1	32	1280	P. PLUS	600 2175
2	32	1280	P. PLUS	600 2175
3	32	1280	P. PLUS	600 2175
4	32	1280	P. PLUS	600 2175
5	32	1280	P. PLUS	600 2175
6	32	1280	P. PLUS	600 2175
7	32	1280	P. PLUS	600 2175
8	32	1280	P1	600 1049
9	32	1280	P1	600 1049
10	32	1280	P. PLUS	600 2175
11	32	1280	P. PLUS	600 2175
12	32	1280	P. PLUS	600 2175
13	32	1280	P. PLUS	600 2175
14	32	1280	P. PLUS	600 2175
15	32	1280	P. PLUS	600 2175
16	32	1280	P. PLUS	600 2175
17	32	1280	P. PLUS	600 2175
18	32	1280	P1	600 1049
19	32	1280	P1	600 1049
20	32	1280	P. PLUS	600 2175
21	32	1280	P. PLUS	600 2175
22	32	1280	P. PLUS	600 2175
23	32	1280	P. PLUS	600 2175
24	32	1280	P. PLUS	600 2175
25	32	1280	P. PLUS	600 2175
26	32	1280	P. PLUS	600 2175
27	32	1280	P. PLUS	600 2175
28	32	1280	P. PLUS	600 2175
29	32	1280	P. PLUS	600 2175
30	32	1280	K2	450 2026
31	32	1280	K2	450 2026
32	32	1280	K2	450 2026
33	32	1280	K2	450 2026
34	32	1280	K2	450 2026
35	32	1280	P. PLUS	600 2175
36	32	1280	P. PLUS	600 2175
37	32	1280	P. PLUS	600 2175
38	32	1280	P. PLUS	600 2175
39	32	1280	P. PLUS	600 2175
40	32	1280	P. PLUS	600 2175
41	32	1280	P. PLUS	600 2175
42	32	1280	P. PLUS	600 2175
43	32	1280	P. PLUS	600 2175
44	32	1280	P. PLUS	600 2175
45	32	1280	P. PLUS	600 2175

ALL RADIATORS MANUFACTURED BY STELRAD COMPLETE WITH THERMOSTATIC RADIATOR VALVE ON FLOW AND LOCKSHIELD VALVE ON RETURN

VAV UNIT SCHEDULE			
REF	UNIT No	MODEL	TYPICAL CONTROL No
1	A6/1	FXYS 88DUCTED	14
2	A6/2	FXYS 88DUCTED	13
3	A6/3	FXYS 88DUCTED	12
4	A6/4	FXYS 88DUCTED	11
5	A6/5	FXYS 88DUCTED	10
6	B6/1	FXYS 88DUCTED	5
7	B6/2	FXYS 88DUCTED	6
8	B6/3	FXYS 88DUCTED	7
9	B6/4	FXYS 88DUCTED	8
10	B6/5	FXYS 88DUCTED	9
11	C6/1	FXYS 88DUCTED	0
12	C6/2	FXYS 88DUCTED	1
13	C6/3	FXYS 88DUCTED	2
14	C6/4	FXYS 88DUCTED	3
15	C6/5	FXYS 88DUCTED	4

CONTROL No = CONTROLLER PANEL REF. FOR MAINTENANCE USE

UNIT No(A) = DRAWING REF.

ALL PERIMETER SUPPLY AIR PLENUMS ARE 1000mm LONG.

Report No:-
N/A
Scale:- NTS



Global House,  
 Geddings Road,  
 Hoddesdon,  
 Herts.  
 EN11 0NT  
 Tel: 01992 535445  
 Fax: 01992 456435